

# Start Here

## Broadcast Network Processor (BNP) Quick Reference



### Twelve Steps to Installing and Configuring the BNP

#### 1 Parts List

Before you begin the installation of the BNP you will need the following items.

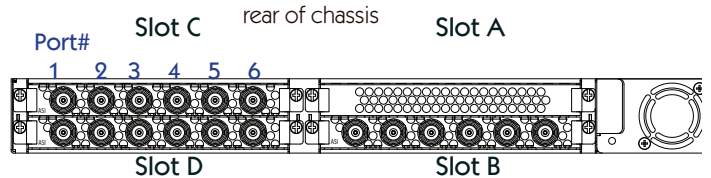
Included items:

- Populated BNP chassis
- AC power cord, included if AC power supply is used
- DC connector cables, if DC power supply is used
- Front and rear rack mount brackets
- 22 rack mount bracket screws
- 1 M4 grounding nut

Other required items (not included):

- Phillips screwdriver
- 8 rack mount screws
- Crossover cable long enough to connect the BNP and the management workstation
- Workstation for configuration
- 1 or more Gigabit Ethernet copper or optical SFP modules

The BNP can be used with between one and four modules, depending on your requirements.

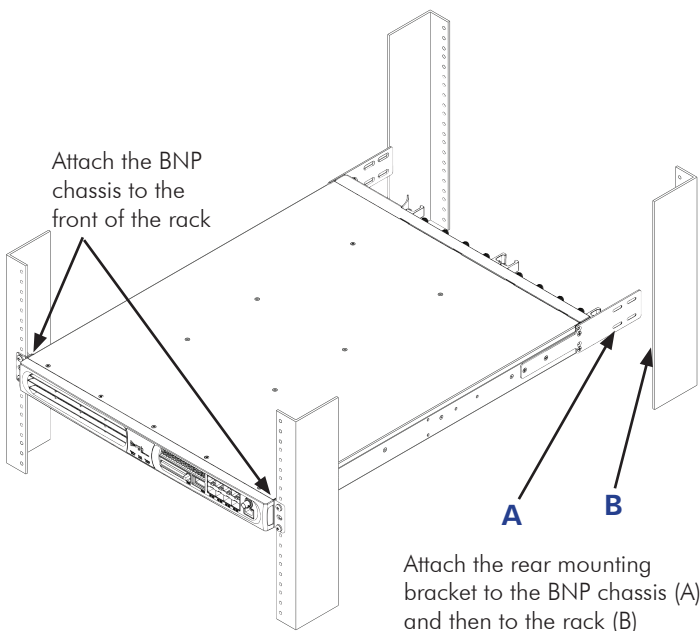


#### 3 Install recommended SFPs according to the manufacturer's instructions.

Recommended SFPs	
Tyco	1382392-3: Multi mode 850 nm, 1 GigE, LC Optical transceiver
	1511094-3: Single mode 1310 nm, 1 GigE, LC Optical transceiver
Finisar	FCMJ-8521-3: Active copper SFP
	FTRJ1319P1BTL: Single mode 1310 nm, 1GigE, LC optical transceiver
	FTRJ8519P1BTL: Multi mode 850 nm, 1GigE, LC optical transceiver

#### 2 Rack Mount the BNP

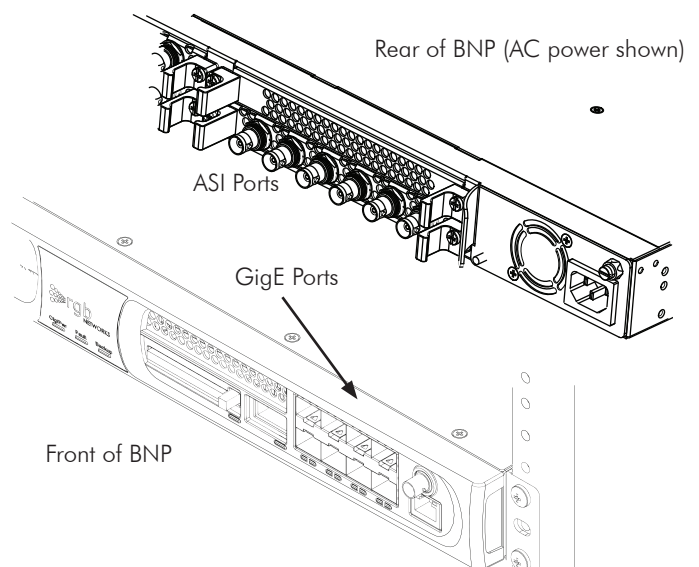
1. Using the provided screws, attach the front rack mount bracket to one side of the chassis, then attach the rear rack mount bracket. Repeat on the other side of the chassis.
2. Secure the front of the chassis to the rack. Connect the rear rack mount extensions between the rear rack mount brackets and the rack.
3. Slide the mounting brackets to the correct distance and secure them.
4. Ground the chassis.



#### 4 Connect the Ports

Use the correct cable for the port type and your network configuration:

- 10/100BaseT Gigabit Ethernet port, used to communicate with an external console.
- ASI ports, located on the rear of the chassis. Use a push/twisting motion to ensure proper seating of the cables, shown in closeup.
- The Gigabit Ethernet ports must have approved SFPs before cabling.

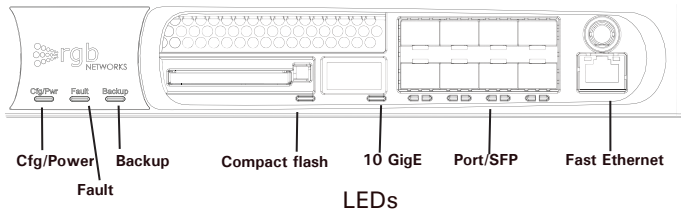


## 5 Power Up

Connect all ports before applying power.

Locate the included AC power cable and plug one end into the BNP power connector. Plug the other end of the power cable into the input power source. The unit should now have power and the Cfg/Pwr LED turns solid green.

For DC power, cut the provided DC connector cables to the correct length to reach the BNP from the power source. Attach the connector cables from the power source to the BNP power connectors. Attach the other end of the power connector cables into the input power source. Toggle the external circuit breaker to the ON position. The unit should now have power and the Cfg/Pwr LED turns solid green.



## 6 Element Manager

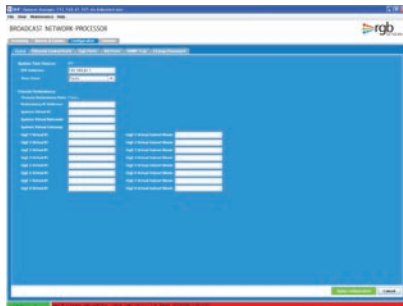
Element Manager requires JRE v1.5 or higher. You can install JRE from Sun's web site or from the included product CD.

To launch Element Manager:

1. Open a browser session on the management workstation.
2. Enter the IP address of the BNP into the browser's address field. The default IP address is 10.1.1.1. The address of the computer being used must be changed to an address on the same subnet as the BNP.
3. Click Launch Element Manager.
4. Enter the IP Address of the BNP.
5. Select your user account and enter the corresponding password.

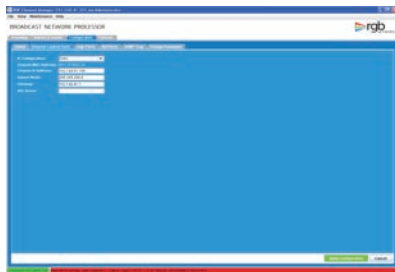
## 7 Global Configuration

1. Select Configuration > Global Chassis Configuration.
2. Enter the necessary settings and click Apply.



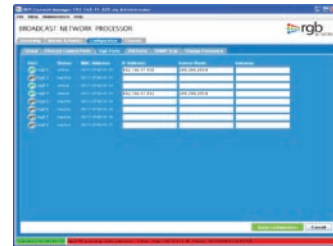
## 8 Ethernet Control Port Configuration

1. Select Configuration > Ethernet Port Control.
2. Enter the necessary settings and click Apply.



## 9 GigE Port Configuration

1. Select Configuration > GigE Control Port Configuration.
2. Configure the ports by enabling the port and providing the IP address, subnet, and gateway for each.
3. Repeat for each port and click Apply.



## 10 SNMP Configuration

1. Select BNP > Configuration > SNMP.
2. Enter the SNMP settings and click Apply.



## 11 ASI Configuration

1. Select BNP > Configuration > ASI Port.
2. Use the pull-down list for direction to select or change the data flow direction of a specific port and click Apply.



## 12 Reboot the BNP

The BNP can be rebooted through a power cycle or using the Element Manager application.

- To power the unit down, disconnect the power cable from the connector.
- To reboot the switch from EM, select Maintenance > Reboot, then click Apply Reboot.

## Specifications

Parameter	Value
Input Power	AC: 100-127 VAC @ 7.6A to 200-240 VAC @ 3.8A DC: 48 VDC @ 14A (range 36-75 VDC)
Line frequency	50Hz to 60Hz
Pwr Consumption	300 W maximum (fully loaded)
Dimensions	1.75" x 19" x 23"
Weight	30 lbs (11.34 kg)
Cooling	Front to back

Env. Condition	Limitation
Nonoperating Temp	-40° to 70° C (-40° to 158° F)
Operating Temp	0° to 40° C (32° to 104° F)
Humidity	5% to 95% (non-condensing)

